



# CONNECT PREMIUM

## INCLUSIONS UPGRADE



**PLUS**  **smeg**  
technology with style  
APPLIANCE UPGRADE  
INCLUDED



✓ HIGHER CEILINGS ✓ STONE BENCH TOPS ✓ TILES TO ALFRESCO  
✓ FREESTANDING BATH ✓ ELECTRICAL UPGRADES ✓ UPGRADED INSULATION

LIMITED  
TIME ONLY!



# KITCHEN UPGRADE

- A** 20mm stone benchtops to kitchen
- B** Laminated overhead cupboards including fixed undermount rangehood
- C** Stylus Blaze Pin sink mixer
- D** Franke 1  $\frac{3}{4}$  kitchen sink
- E** Melamine shelving to pantry
- F** Cold water point to fridge space



**PLUS**  
**smeg**  
technology with style

**APPLIANCE  
PACKAGE**  
(items detailed  
next page)



B

# APPLIANCE UPGRADE

H

SMEG 900mm stainless steel 5 burner gas cooktop



G

SMEG stainless steel  
microwave oven



I

SMEG 600mm stainless steel  
underbench oven





**J** SMEG 900mm stainless steel undermount  
rangehood (view previous kitchen page)

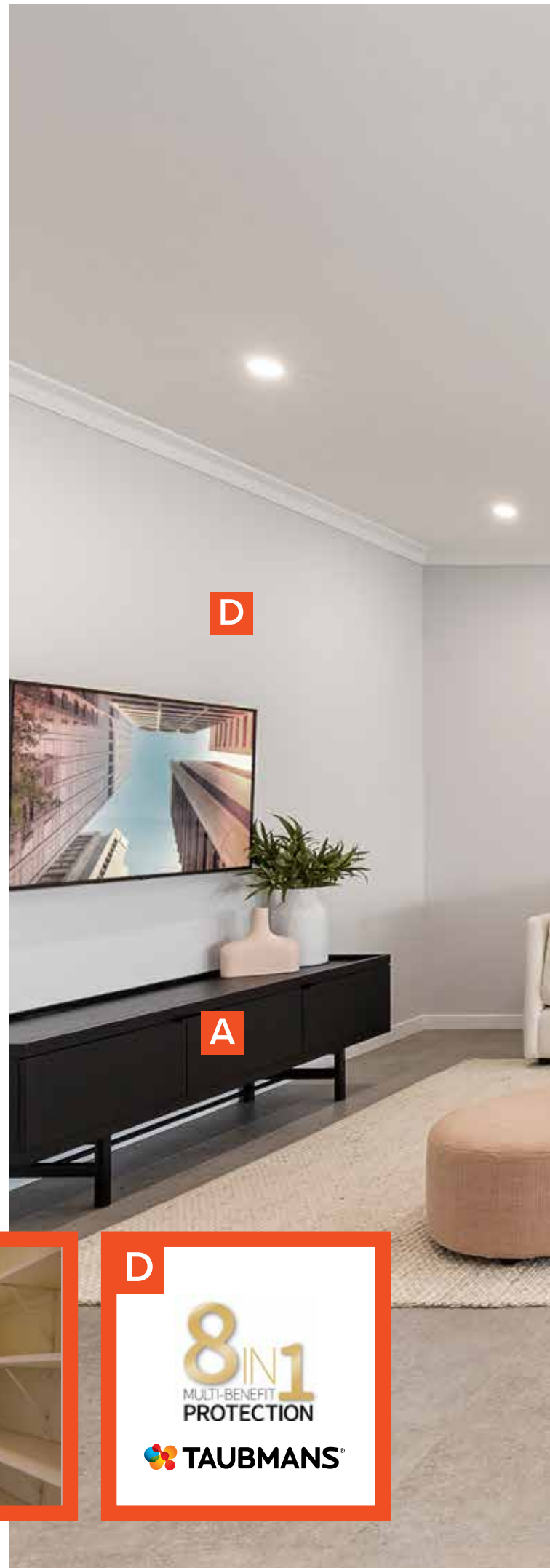


**K** SMEG 600mm stainless  
steel dishwasher

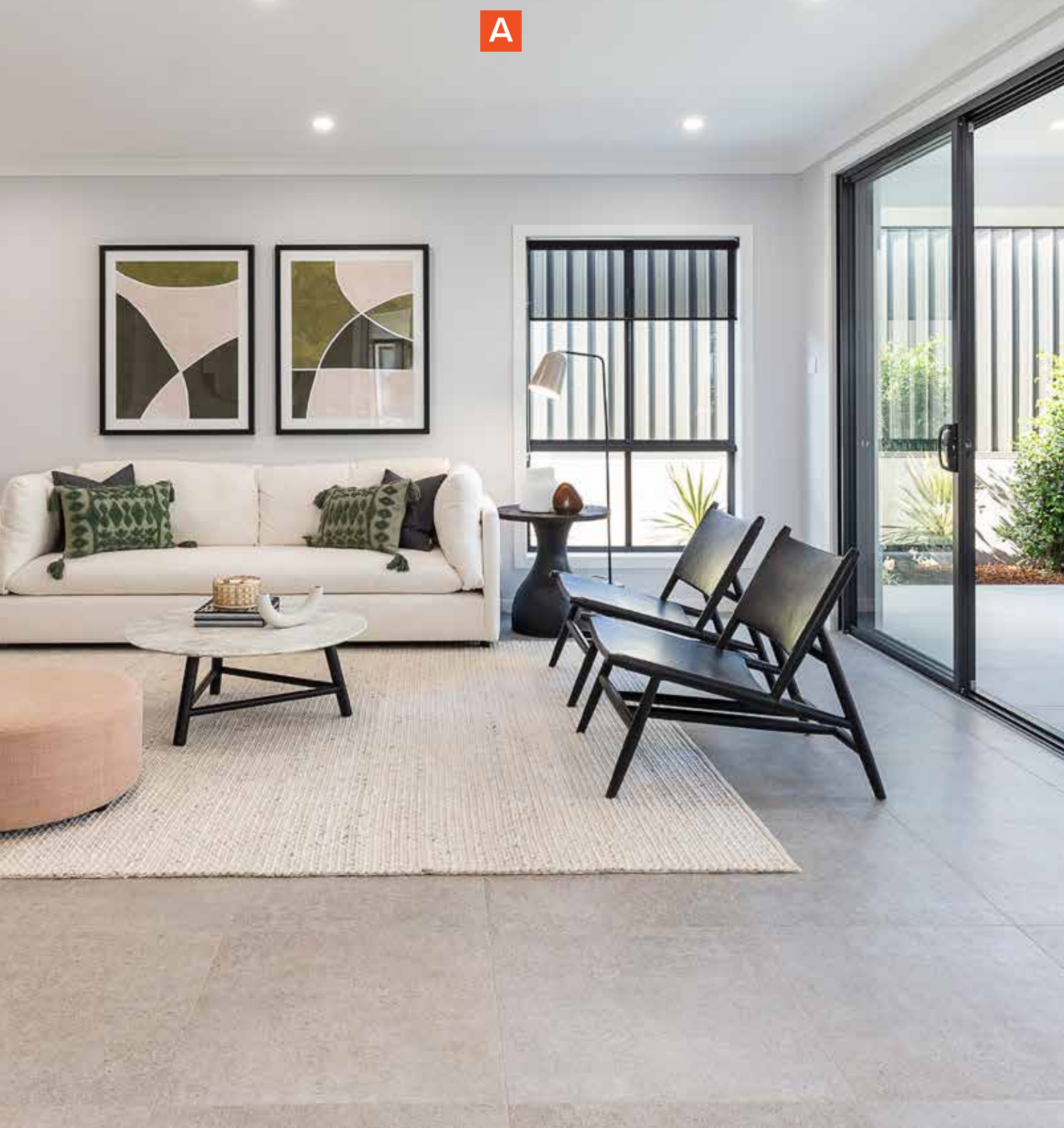


# LIVING UPGRADE

- A** 2590mm ceiling to single storey homes and ground floor of double storey homes
- B** 2340mm high internal (excludes robes) doors to single storey homes and ground floor of double storey homes & 2040mm high doors to first floor
- C** Standard white melamine shelving to robes and linen throughout
- D** Taubmans Endure 8-in-1 multi-benefit paint system



A



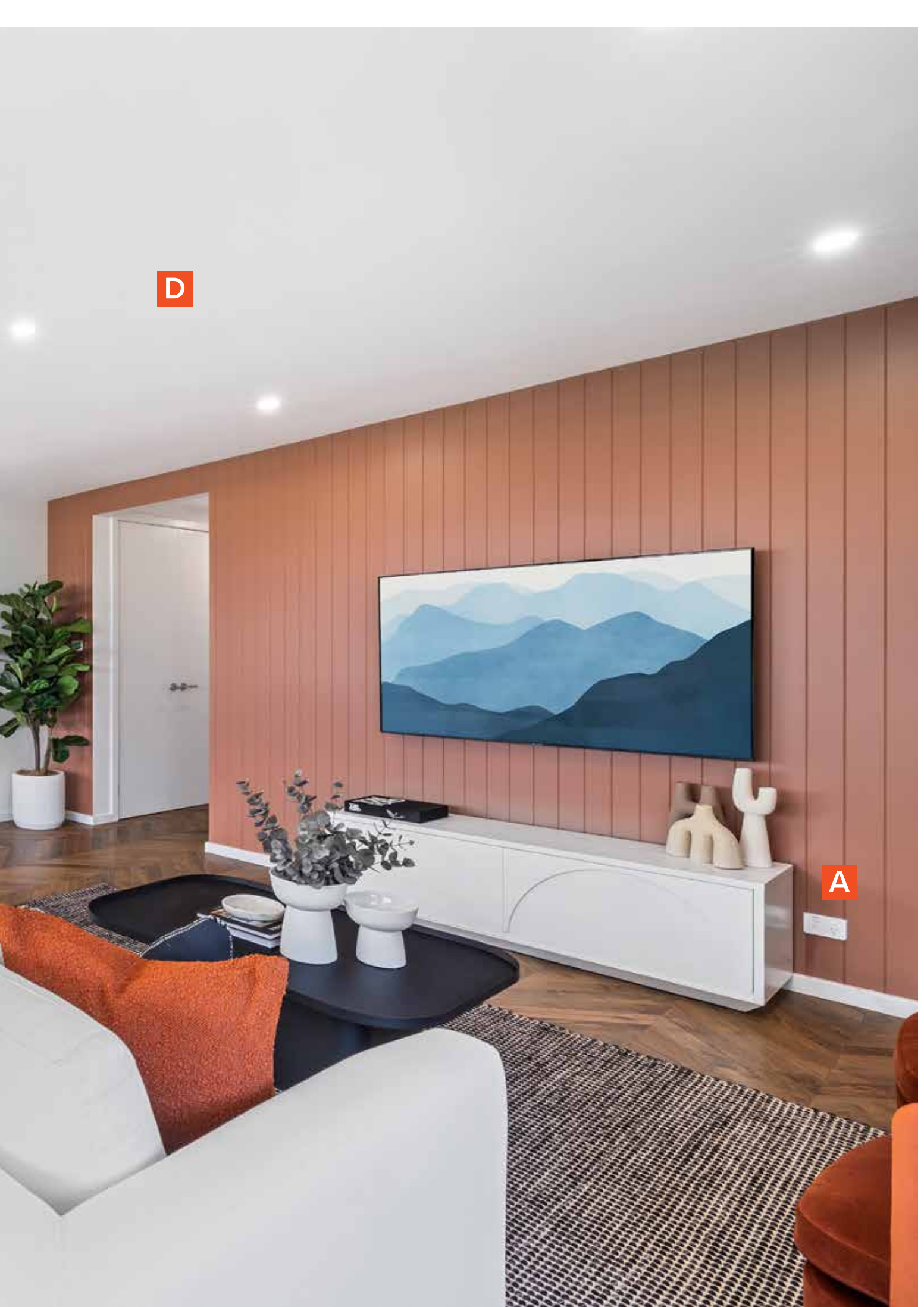
# ELECTRICAL UPGRADE

- A** Clipsal Iconic™ double power points throughout as nominated on plan
- B** Clipsal Iconic™ TV point to family room
- C** Clipsal Iconic™ phone point to kitchen
- D** Downlight pack to living areas (as per electrical plan)
- E** Clipsal Iconic USB power outlet (x3 as per electrical plan)

**B****C****E**



D



A

# ALFRESCO UPGRADE

- A** Tiles to portico and alfresco
- B** Three (3) panel aluminium stacker door (2400mm high)
- C** Stainless Steel look ceiling fan (1)





C

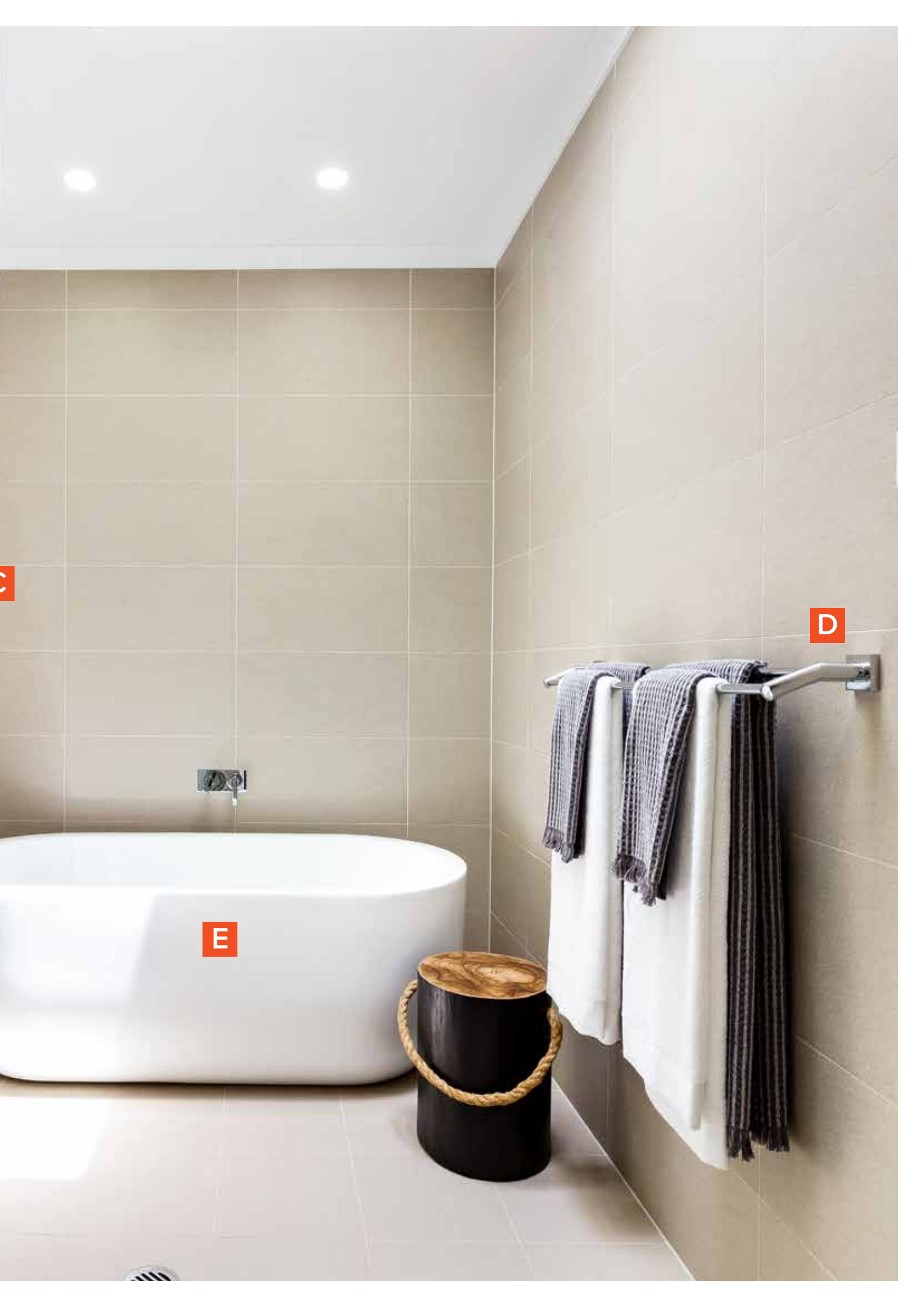


# BATHROOM UPGRADE

- A** 20mm stone benchtop to ensuite, bathroom & powder room (if applicable)
- B** Caroma Urbane II inset vitreous china vanity basin
- C** Grange overlap semi-frameless shower screen
- D** Dorf Enix range accessories to ensuite, bathroom & powder room (if applicable)
- E** Stylus Origin freestanding 1600 bath to bathroom
- F** Caroma pin multifunction shower rail to ensuite and shower rose to bathroom
- G** Parisi Elli II basin mixer tapware to ensuite, bathroom & powder room (if applicable)







C

D

E

# EXTERNAL UPGRADE

- A** 6 Star Rheem instantaneous gas hot water system
- B** Termite resistant hybrid framing system - combination of steel frame and treated timber trusses
- C** Bradford R3.0 glass wool ceiling insulation batts (excludes garage, front porch and alfresco)
- D** Bradford R1.5 glass wool wall insulation batts to external walls









[www.connecthomes.com.au](http://www.connecthomes.com.au)



Photographs in this brochure are for illustrative purposes only to show selected inclusions. The Connect Premium promotion applies to Connect Homes only from 23/3/2022 and is not available with any other offer. Only the items highlighted in this brochure are included in the Connect Premium promotion. There are no credits for any items deleted from this promotion. Items are in addition to or in lieu of the Connect standard inclusions. Colour schemes are pre-determined from the Connect colour boards and cannot be changed. For a detailed list of inclusions and exclusions, please speak to an Eden Brae Sales Consultant. 247792C. Effective May 2024.