

The Aria

 x4  x2  x2

**TURNKEY
PACKAGE**
from
\$185,000*



*after first homeowners grant

**4 BEDROOMS | 2 BATHROOMS | 2 CAR
STUDY NOOK | WALK IN PANTRY | WALK IN ROBE**

Incredible value and luxury inclusions make this turn key package a stand out option in the market. With plenty of room and all the extra features to make life comfortable for you and your family.

When you build with MSN Homes you can be sure you'll have a home built to the highest quality standards. Our builds have won multiple awards and we put complete care and finesse into every project to ensure you love your new home.

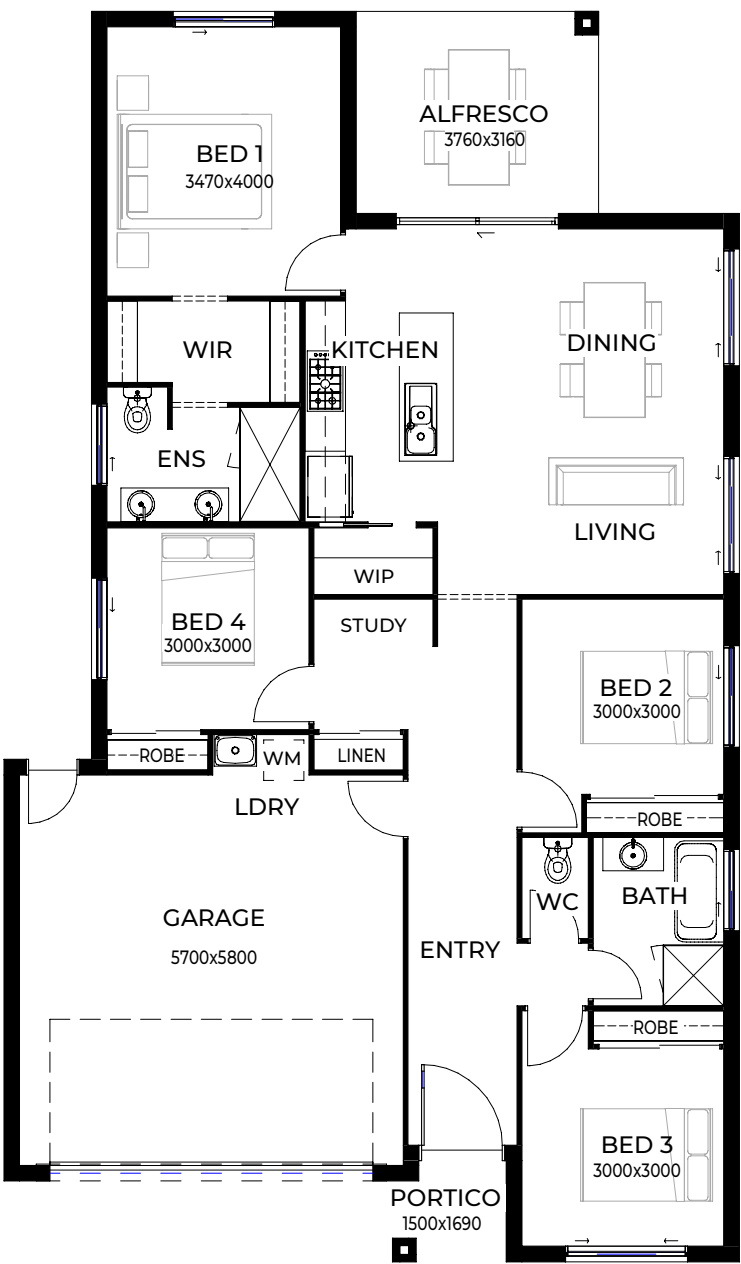
*Luxury living
is our standard*



FEATURES

-  2590MM CEILINGS
-  TURF
-  FENCING
-  600 X 600 TILES FROM SILVER RANGE
-  1200MM WIDE FRONT ENTRANCE DOOR
-  20MM CAESARSTONE BENCHTOPS
-  DAIKIN SPLIT SYSTEM AIR CON TO MAIN LIVING & MASTER BED
-  AGGREGATE DRIVEWAY
-  900MM WESTINGHOUSE APPLIANCES
-  SLAB UP TO H1 (EXCLUDES PIERING)
-  ROLLER BLINDS
-  FREESTANDING BATH
-  FREE UPGRADE TO STEEL FRAME

FLOORPLAN



HOME AREA:	125.6m ²	13.5sq
GARAGE AREA:	36.0m ²	3.8sq
OUTDOOR AREA:	10.8m ²	1.16sq
PORCH AREA:	2.4m ²	0.25sq
TOTAL AREA:	174.8m²	18.8sq

HOME WIDTH:	10.92m
HOME LENGTH:	18.57m
MIN BLOCK:	12.50m

This document is produced for marketing and illustrative purposes and should only be used as a guide. Plans are not to scale, and all images, materials used and inclusions are indicative only. Copyright of MSN Homes.